

ACOUSTIC BLADES

These acoustic ceiling panels offer style and sound absorption in a sleek and easy-to-install design that adds function and dimension to your cloud space.



SIZES

Length

- 24 in
- 36 in
- 48 in
- 60 in
- 72 in
- 84 in
- 96 in
- Custom

Height

- 6 in
- 8 in
- 10 in
- 12 in
- Custom

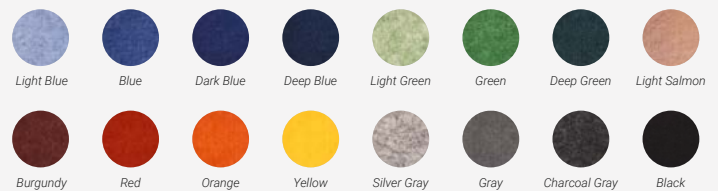
Thickness

- 1.5 in
- 2 in
- Custom

All sizes are nominal. Refer to Drawing files for actual sizes.

ACOUSTIC COLOR OPTIONS

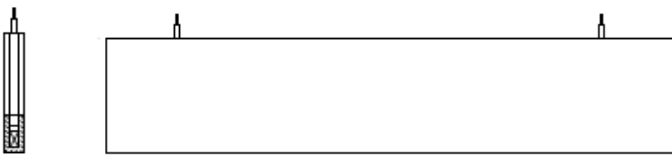
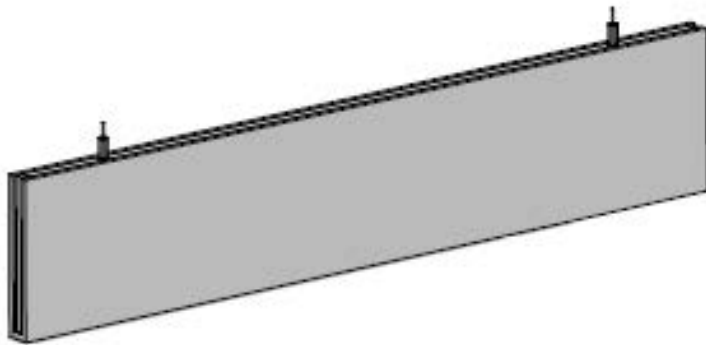
Basic Colors



Note: Colors come in recycled PET acoustic material. Custom acoustic colors are available and may result in a minimal upcharge.

ACOUSTIC BLADES

These acoustic ceiling panels offer style and sound absorption in a sleek and easy-to-install design that adds function and dimension to your cloud space.



SIZES

Length

24 in

36 in

48 in

60 in

72 in

84 in

96 in

Custom

Height

6 in

8 in

10 in

12 in

Custom

Thickness

1.5 in

2 in

Custom

All sizes are nominal. Refer to Drawing files for actual sizes.

FEATURES

Our acoustic blades are simple to specify and simple to install. Available in 84 standard sizes and 16 standard colors, you can create the perfect solution for you project.

If you have a specific size or color request, customize it! Use our product selector on our website to tell us what color or size you are looking for, and we can help you make your own beams.

- Made with lightweight panel technology.
- Made using eco-friendly materials and processes.
- Finished with recycled PET acoustic material. Slight color variations are expected.
- Easy to install.
- Class A fire rating, ASTM E-84 test
- Aircraft Cable Suspension hardware is included.

ACOUSTIC BLADES

These acoustic ceiling panels offer style and sound absorption in a sleek and easy-to-install design that adds function and dimension to your cloud space.

SPECIFICATIONS

PRODUCT

| | |
|--|---|
| Name | Altispace Acoustic Blades |
| Content | Acoustic PET material, wood frame, fiberboard, honeycomb door core. |
| Panel Thicknesses | 1.5 in, 2 in |
| Standard Sizes <i>*All sizes are nominal</i> | Lengths: 24 in, 36 in, 48 in, 60 in, 72 in, 84 in, 96 in Heights: 6 in, 8 in, 10 in, 12 in |
| Durability | Contract/Commercial |
| Maintenance | Dust and dirt on the panels and suspension hardware can be removed with a vacuum. For stains, apply distilled water or carpet shampoo with a soft, lint-free cloth and blot dry. Refer to the Cleaning and Maintenance document for more details. |
| Lead Time | Products are made to order and certain lead times will apply. |
| Environmental | Altispace Acoustic Blades are made using eco-friendly materials and practices. See page 4 for more details. For more information, contact 226-636-5965. |
| Custom | Custom sizes and colors are available and may result in a minimal upcharge. Further customization (such as LED lighting integration) are also available at an upcharge. |
| Variation | Colors of laminate finish on screen may vary from actual product. |
| Acoustics | Test reports available upon request. Refer to the Acoustic Information document for more details. |
| Fire Rating | Class A fire rating, ASTM E-84 test. Test reports available upon request. Refer to the Fire Rating Information document for more details. |

INSTALL

| | |
|--|---|
| Suspension Options | 1) Aircraft cable (Refer to Suspension Hardware Information) 2) Unistrut System (Refer to Suspension Hardware Information) |
| Ceiling Attachment Options for Suspension Cable | By installation contractor |
| Installation | Refer to Installation Guide for Acoustic Blades. |
| Unistrut Installation | Refer to Installation Guide for Acoustic Blades. |

ACOUSTIC BLADES

These acoustic ceiling panels offer style and sound absorption in a sleek and easy-to-install design that adds function and dimension to your cloud space.

THE ENVIRONMENT

The acoustic material is manufactured by recycling plastic bottle chips, used polyester fabric and other reused products.

THE PRODUCT

| SPECS | BENEFITS |
|--|--------------------------------|
| 3D crimp staple fiber and recycled PET | Made from 100% polyester |
| Melted PET filaments joined together | No glue and adhesive |
| Combed filament and needle punched | Structurally rigid |
| Color injected into filament | Long color duration |
| Low water permeability and moisture absorption | Water resistant |
| Horizontal and vertical fibers woven together | Impact resistant |
| NRC ratings 0.8 with cavity | Great acoustical performance |
| Non toxic, no odor and low VOC | Formaldehyde free |
| No risk of skin irritation or respiratory problems | Great for healthy environments |
| Pin-able facade finishing | Versatile finish |
| Heat treated up to 200° | Bacteria and fungi resistant |
| Stable PET material and panel structure | Excellent durability |
| Low-carbon and environmentally friendly | Recycled and recyclable |

RECYCLED CONTENT

| MATERIAL | PRE-CONSUMER | POST CONSUMER | TOTAL |
|------------------------|--------------|---------------|-------|
| Dorkor | 0% | 100% | 100% |
| High Pressure Laminate | 0% | 34% | 34% |
| F/J Pine Frame | 0% | 0% | 0% |
| Acoustic Material | 45% | 0% | 45% |