



# LAMINATED/ACOUSTIC SHAPES INSTALLATION GUIDE



# AIRCRAFT CABLE INSTALLATION GUIDE

## STEP 1

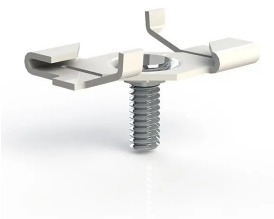
Remove product from the protective packaging and review the instruction manual and ceiling layout.

## STEP 2

Layout and install ceiling connection hardware according to ceiling layout.

- Contractor is responsible for the supply and installation of ceiling connection hardware.
- It is the responsibility of the Contractor to ensure ceilings are adequately reinforced to support fixture weight. Please direct any questions as to product weight and any other technical adviceto our team. Contact us at [226-636-5965](tel:226-636-5965) or email us at [info@altispace.com](mailto:info@altispace.com)
- Altispace is not liable for inadequately reinforced ceilings.
- Ceiling attachment method specified at time of ordering.

### CEILING ATTACHMENT METHODS



**T-BAR**  
T-Bar Clip With 1/4-20 Threaded Stud Supplied by Contractor



**EYE BOLT**  
Eye Bolt Supplied by Contractor



**SURFACE MOUNT**  
Cable Gripper Supplied by Altispace



**1/4-20 Threaded Cable Gripper** Supplied by Altispace



**Cable Gripper** Supplied by Altispace



CONNECT YOUR CEILING  
ATTCHMENTS AT RED  
HIGHLIGHTED ARROW  
(USE T-BAR OR EYE BOLT  
OR SURFACE MOUNT METHOD)



### STEP 3

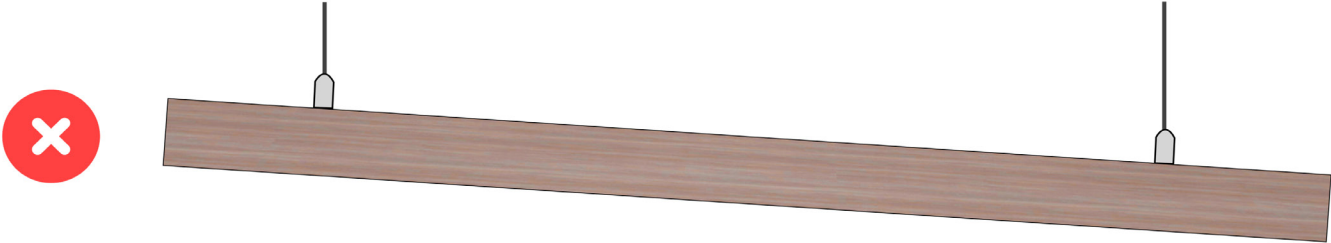
Install the threaded bottom cable gripper into the threaded insert provided on top of the Shape, and tighten.

CAUTION: DO NOT OVER TIGHTEN.



# STEP 4

Adjust the cables by pulling the cable through the cable adjuster to ensure the Shape is level at the specified ceiling height.



## STEP 5

Your Laminated / Acoustic Shapes are now installed!



## CONTACT US

We value your feedback and are committed to providing excellent customer service. Don't hesitate to contact us, we're here to help you!

Email : [info@altispace.com](mailto:info@altispace.com)

Phone : 226-636-5965

Website : [www.altispace.com](http://www.altispace.com)

